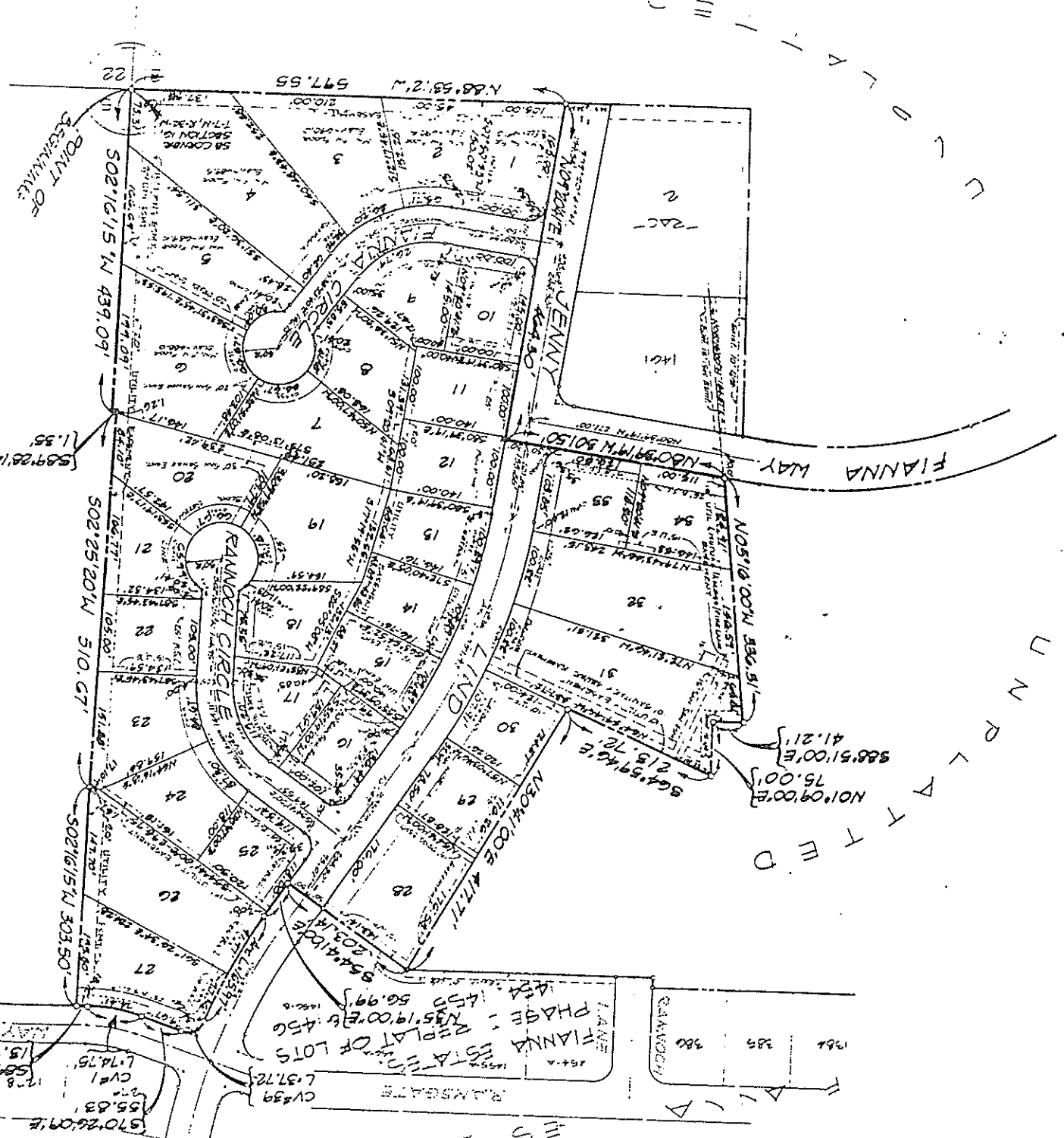


DEVELOPERS:  
 FINNIA HILLS DEVELOPMENT CO., INC.  
 5101 PAPER MILL ROAD  
 FORT SMITH, ARKANSAS

STATE OF ARKANSAS  
 COUNTY OF SEBASTIAN  
 Sworn and subscribed before me this day of September, 1989

FILED FOR RECORD THIS 6th day of September, 1989  
 at 8:59 a.m.  
 B. J. [Signature]  
 Recorder

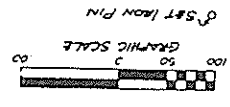


**CORRECTED PLAN**  
**FIANNA ESTATES, PHASE I REPLAT**  
**BEING A REPLAT OF LOTS 1457 THRU 1460**  
**AND LOTS 1462 THRU 1466**  
**AN ADDITION TO THE CITY OF**  
**FORT SMITH, SEBASTIAN COUNTY, ARKANSAS**  
 SCALE: 1" = 100'  
 DATE: DEC. 22, 1988

NOTE: THIS PLAN IS FILED FOR THE PURPOSE OF CORRECTING THE EAST SUBDIVISION BOUNDARY LINE AND THE ASSOCIATED DIMENSIONS ON LOTS 9, 20, 21, 22, 23 & 26.

LEGAL DESCRIPTION  
 BEING PART OF THE SOUTHWEST 1/4 OF THE SOUTHWEST 1/4 OF SECTION 16, T-7-N, R-22-W, SEBASTIAN COUNTY, ARKANSAS AND ALSO BEING LOTS 1457, 1458, 1459, 1460, 1461, 1462, 1463, 1464, 1465 & 1466 OF PLANNA ESTATES, PHASE I, AN ADDITION TO THE CITY OF FORT SMITH, ARKANSAS, AS FILED FOR RECORD ON JULY 30, 1986 AT 2:06 P.M. AND BEING MORE PARTICULARLY DESCRIBED AS FOLLOWS:

BASIS FOR BEARINGS:  
 BEARING CALLS FROM ADJOINING PLATTED SUBDIVISION.



CURVE DATA CHART

CURVE NO.	START POINT	END POINT	CHORD BEARING	CHORD LENGTH	ARC LENGTH	RADIUS	ANGLE
1	...	...	...	...	...	...	...
2	...	...	...	...	...	...	...
3	...	...	...	...	...	...	...
4	...	...	...	...	...	...	...
5	...	...	...	...	...	...	...
6	...	...	...	...	...	...	...
7	...	...	...	...	...	...	...
8	...	...	...	...	...	...	...
9	...	...	...	...	...	...	...
10	...	...	...	...	...	...	...
11	...	...	...	...	...	...	...
12	...	...	...	...	...	...	...
13	...	...	...	...	...	...	...
14	...	...	...	...	...	...	...
15	...	...	...	...	...	...	...
16	...	...	...	...	...	...	...
17	...	...	...	...	...	...	...
18	...	...	...	...	...	...	...
19	...	...	...	...	...	...	...
20	...	...	...	...	...	...	...
21	...	...	...	...	...	...	...
22	...	...	...	...	...	...	...
23	...	...	...	...	...	...	...
24	...	...	...	...	...	...	...
25	...	...	...	...	...	...	...
26	...	...	...	...	...	...	...
27	...	...	...	...	...	...	...
28	...	...	...	...	...	...	...
29	...	...	...	...	...	...	...
30	...	...	...	...	...	...	...

FILE PLAT - CORRECTED  
 REPLAT OF LOTS 1457, 1458, 1459, 1460, 1462, 1463, 1464, 1465 & 1466 OF  
 FIANNA ESTATES, PHASE I  
 FORT SMITH, ARKANSAS  
 DERRICK A. ASSOCIATES  
 110 WEST PERRY RD.  
 FORT SMITH, ARKANSAS 72501

STAR SURVEYORS OFFICE  
 500-074-521-0-16-220-65-0775

